

1

Valcor Scientific

High Purity Pneumatic Operated Valve

Model: SV51A Polypropylene, 2-Way, Normally Closed

Model: SV52A Polypropylene, 2-Way, Normally Open



INTRODUCTION

Valcor Scientific, a Division of Valcor Engineering, has designed and engineered rugged, reliable pneumatic operated valves for more than 50 years.

The Models SV51A/SV52A are specifically engineered for controlling a wide range of industrial fluids as well as for bubble tight shut-off.

DESCRIPTION

The SV51A/SV52A Series are direct acting, two-way, diaphragm valves, utilizing Valcor's

Dri-Operator design, in which a flexible diaphragm is used to isolate the valve's metallic parts from the fluid being handled.

The use of a TFE Teflon® body and diaphragm provides compatibility with a wide range of fluids as well as bubble-tight shut-off. The use of a right angle body provides greater flow for a given orifice size than comparable globe ported valves.

The SV51A/SV52A Series is available in four orifice sizes.

APPLICATIONS

Model SV51A/SV52A valves are suitable for a broad range of light industrial applications, both new and retrofit. Typical applications employing Model SV51A/SV52A valves include:

- Cell counters and protein synthesis in biotechnology.
- Bottle filling machinery.
- Paper rolling, ambient air analyzers, filling machinery, aerosol equipment in industrial applications.
- Photo processing and chemical blending for reprographics.

FEATURES

- Inert construction for use with a wide range of fluids.
- Cost-effective alternative to Teflon® valves.
- Bubble-tight shut-off.
- Higher flow than comparable globe ported valves.
- Mountable in any position.
- Direct acting design.

SPECIFICATIONS

Size: 3.5" H x 2.0" W x 1.5" D (N.C.)
 4.0" H x 2.0" W x 1.5" D (N.O.)
 Weight: 4.0 oz. (127.7 g) N.C.
 4.2 oz. (131.6 g) N.O.
 Port Connection: 1/4" NPT

Materials in Contact with Fluid: Polypropylene body, Neoprene
 Viton®, or EPDM diaphragms
 Actuation Pressure: 30 to 60 PSI Air
 Special Requirements: Consult Factory
Teflon® is a registered trademark of the DuPont company

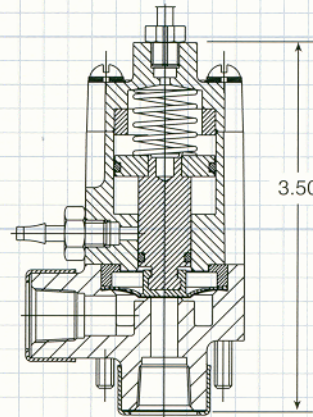
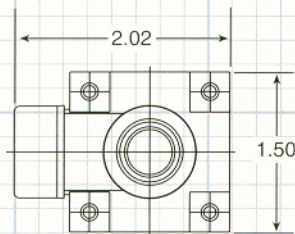
PERFORMANCE SPECIFICATIONS

Model Number		Orifice Size	C _v	PSIG		Minimum Actuating Pressure (PSI Air)
Normally Closed	Normally Open			Gas	Liquid	
SV51APX4-1	SV52APX4-1	1/16"	0.10	125	125	30 to 60
SV51APX4-3	SV52APX4-3	1/8"	0.40	85	40	30 to 60
SV51APX4-6	SV52APX4-6	1/4"	1.00	45	20	30 to 60
SV51APX4-8	SV52APX4-8	3/8"	1.90	15	12	30 to 60

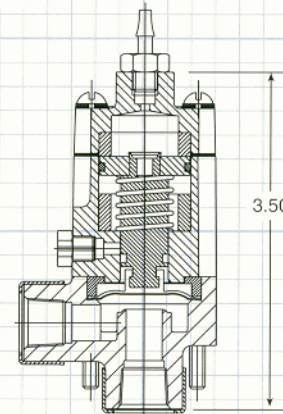
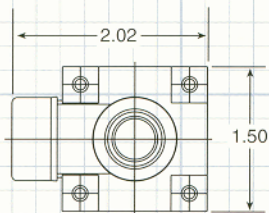
Elastomer Code (X): 2 = Viton

8 = EPDM

OUTLINE DIMENSIONS MODEL SV51A - NORMALLY CLOSED



OUTLINE DIMENSIONS MODEL SV52A - NORMALLY OPEN



1

Valcor Scientific

Valcor Engineering Corporation®

2 Lawrence Road • Springfield, New Jersey 07081

973-467-8400 • Fax: 973-467-9592

scientific@valcor.com • www.valcor.com