

# SV327 & SV427 Series

## 2-Way Zero Differential Pilot Operated Diaphragm Solenoid Valves (1" to 2 ")

**SV327 • Normally Closed**

**SV427 • Normally Open**

These 2-way piloted diaphragm solenoid valves are capable of operating at zero differential pressure. They can be applied over an operating pressure range from 0 PSI to 125 PSI. These valves are offered in a wide variety of diaphragm and body materials to provide on-off control of a variety of fluids. For special applications, contact your Valcor customer service representative.



### Specifications

Operating Mode	Normally Closed	Open when energized, closed when de-energized.	
	Normally Open	Closed when energized, open when de-energized.	
Pipe Size (in.)	1 • 1 1/4 • 1 1/2 • 2		
Orifice Size (in.)	1 • 1 1/4		
Body	Forged Brass, 304 Stainless Steel, Bronze		
Sealing/Seat	Buna N, Ethylene Propylene, Viton		
Housing	Standard	Conduit (NEMA1)	
	Options	Watertight NEMA 4, Terminal	
Available Voltages	AC24V 60Hz	12V DC	
	AC110V 50Hz AC120V 60Hz AC220V 50Hz AC240V 60Hz	24/DC	
Voltage Tolerance	+10% to -15% of applicable voltage		
Coil	Class F and H		
Lead Length	18 inch		
Temperature Ratings	Ambient Temp. -40°F to 150°F max. with Class F Coil; 175°F max. with Class H Coil.		
	Fluid Temp. See the "HOW TO ORDER" Table.		
Mounting position	Solenoid vertical and upright		
Agency Listings	Consult factory		
Options	Manual Override, Neon Lamp, Surge Suppressor		

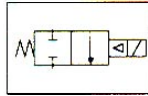
•Consult the factory for specifications other than those listed above.



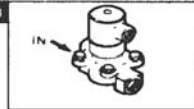
# Valve Selection Sheet

Pipe Size (in.) NPT	Orifice (in.)	Cv	Operating Pressure Differential								Max. Fluid Temp. °F	Housing	Power Consumption (W)		Coil Insulation	Voltage 60 HZ	Model Code		
			Max. PSI										AC	DC			Brass (Bronze for 2" NPT)		Stainless Steel
			Air/Gas		Water		Lt. Oil		Steam										
			AC	DC	AC	DC	AC	DC	AC										

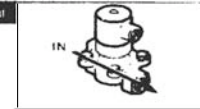
Normally Closed



De-energized

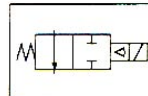


Energized



1	1	13	0	125	125	100	100	70	70	-	180	A	17.5	22.5	F	120	SV327AF02N5FG9	SV327AF02L7FG9
	1	13	0	-	-	100	50	-	-	-	210	A	17.5	22.5	F	120	SV327AF02C5FG9	SV327AF02E7FG9
1 1/4	1 1/4	19	0	125	125	50	50	70	70	-	180	A	17.5	22.5	F	120	SV327AF02N5GJ2	SV327AF02L7GJ2
	1 1/4	19	0	-	-	50	50	-	-	-	210	A	17.5	22.5	F	120	SV327AF02C5GJ2	SV327AF02E7GJ2
1 1/2	1 1/4	25	0	125	125	50	50	70	70	-	180	A	17.5	22.5	F	120	SV327AF02N5HJ2	SV327AF02L7HJ2
	1 1/4	25	0	-	-	50	50	-	-	-	210	A	17.5	22.5	F	120	SV327AF02C5HJ2	SV327AF02E7HJ2
2	1 1/4	28	0	125	125	50	50	70	70	-	180	A	17.5	22.5	F	120	SV327AF02N5JJ2	---
	1 1/4	28	0	-	-	50	50	-	-	-	210	A	17.5	22.5	F	120	SV327AF02C5JJ2	---

Normally Open



De-energized



Energized



1	1	13	0	125	-	125	-	70	-	-	180	A	18.5	-	F	120	SV427AF02N5FG9	SV427AF02L7FG9
	1	13	0	-	-	100	-	-	-	-	210	A	18.5	-	F	120	SV427AF02C5FG9	SV427AF02E7FG9
	1	13	0	-	-	-	-	-	-	50	295	A	18.5	-	H	120	SV427AH02C5FG9	SV427AH02E7FG9
1 1/4	1 1/4	18	0	125	-	125	-	70	-	-	180	A	18.5	-	F	120	SV427AF02N5GJ2	SV427AF02L7GJ2
	1 1/4	18	0	-	-	100	-	-	-	-	210	A	18.5	-	F	120	SV427AF02C5GJ2	SV427AF02E7GJ2
	1 1/4	18	0	-	-	-	-	-	-	50	295	A	18.5	-	H	120	SV427AH02C5GJ2	SV427AH02E7GJ2
1 1/2	1 1/4	23	0	125	-	125	-	70	-	-	180	A	18.5	-	F	120	SV427AF02N5HJ2	SV427AF02L7HJ2
	1 1/4	23	0	-	-	100	-	-	-	-	210	A	18.5	-	F	120	SV427AF02C5HJ2	SV427AF02E7HJ2
	1 1/4	23	0	-	-	-	-	-	-	50	295	A	18.5	-	H	120	SV427AH02C5HJ2	SV427AH02E7HJ2
2	1 1/4	27	0	125	-	125	-	70	-	-	180	A	18.5	-	F	120	SV427AF02N5JJ2	---
	1 1/4	27	0	-	-	100	-	-	-	-	210	A	18.5	-	F	120	SV427AF02C5JJ2	---
	1 1/4	27	0	-	-	-	-	-	-	50	295	A	18.5	-	H	120	SV427AH02C5JJ2	---

## Model Code

<b>S</b>	<b>V</b>	<b>3</b>	<b>2</b>	<b>7</b>	<b>G</b>	<b>F</b>	<b>0</b>	<b>2</b>	<b>N</b>	<b>5</b>	<b>F</b>	<b>G</b>	<b>9</b>	
----------	----------	----------	----------	----------	----------	----------	----------	----------	----------	----------	----------	----------	----------	--

1-2-3-4-5		6	7	8-9		10-11	12-13-14		15
Series	Operating Mode	Housing	Coil Insulation	Applicable Voltage		Material (Seat, Body)	Pipe Connection Size	Orifice	Option
<b>SV327</b>	Normally Closed	A= Conduit	F= Class F	02= 120V/60HZ	110V/50HZ	N5= Buna N, Brass	FG9= 1" (1")		
<b>SV427</b>	Normally Open	W= Watertight NEMA 4	H= Class H	04= 220V/60HZ	220V/50HZ	V5= Viton, Brass	GJ2= 1 1/4" (1 1/4")		
				01= 24V/60HZ		C5= EPR, Brass Buna N, 304 SS	HJ2= 1 1/2" (1 1/4")		
				15= 12V DC		J7= Viton, 304 SS	JJ2= 2" (1 1/4")		
				16= 24V DC		L7= Viton, 304 SS E7= Ethylene Propylene, 304 SS			

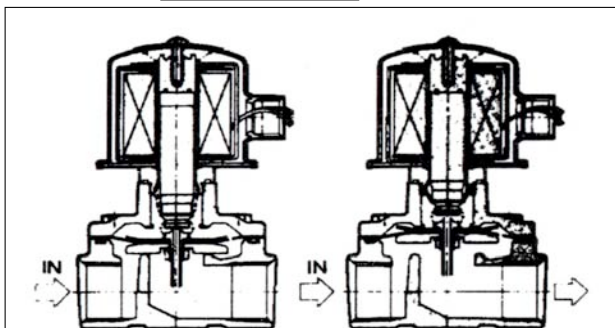
## Coil Data

Model		SV327		SV427	
Frequency (HZ)		50	60	50	60
Power (VA)	Inrush	150	130	160	130
	Holding	27	22	28	22
Power Consumption (W)	AC	17.5		18.5	
	DC	22.5		---	

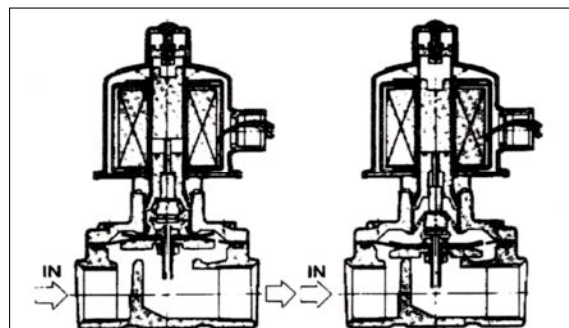
Note: AC power consumption at 110V/50HZ, 120V/60HZ data.

## Construction / Operation

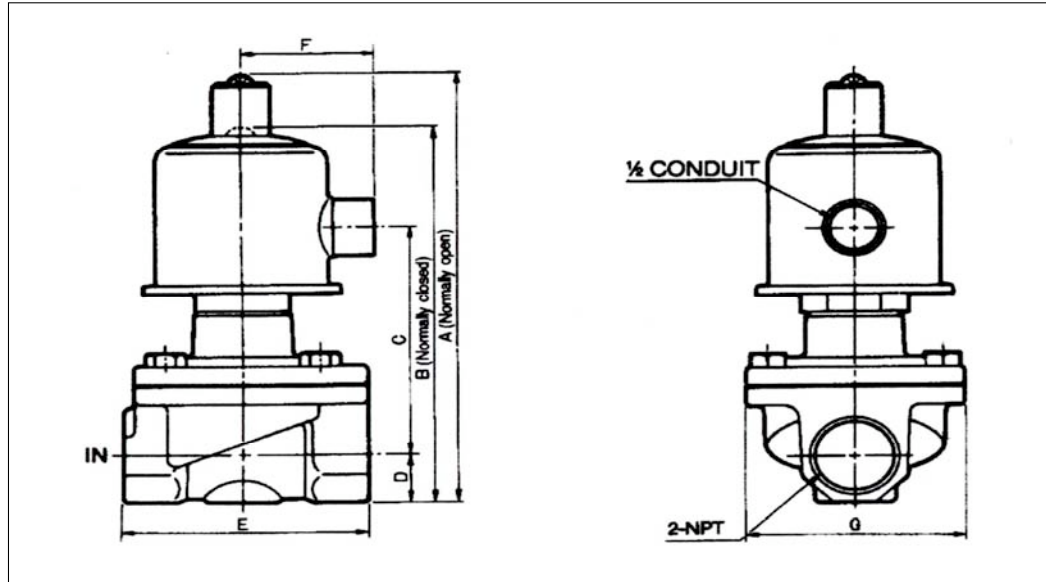
Normally Closed



Normally Open



## External Dimensions



Pipe Connection (NPT)	A	B	C	D	E	F	G	Weight (lb)
1	7.44	6.57	3.90	0.83	3.62	1.97	3.23	5.1
1 1/4	8.15	7.28	4.25	1.18	4.33	1.97	3.62	6.7
1 1/2								
2	8.66	7.80	4.41	1.54	5.51	1.97	3.62	9.1



**Valcor Scientific**

**Valcor Engineering Corporation®**

2 Lawrence Road • Springfield, New Jersey 07081

973-467-8400 • Fax: 973-467-9592

valcorscientific@valcor.com • www.valcor.com

© 2002 Valcor Engineering Corporation® Printed in USA

*Scientific Business Unit*