

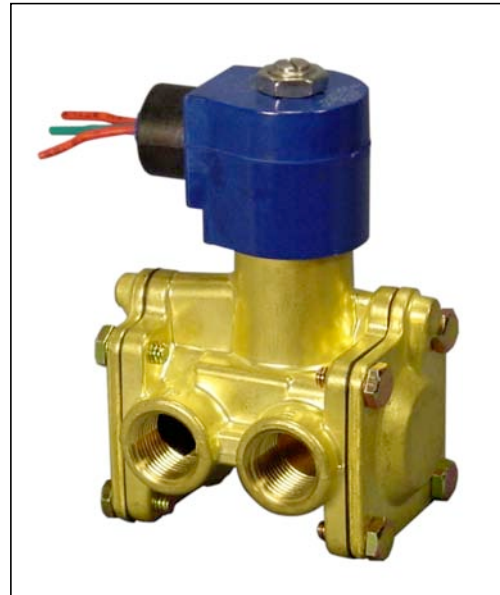
SV323 & SV424 Series

3-Way Pilot Operated Diaphragm Solenoid Valves

SV323 • Normally Closed

SV424 • Normally Open

These 3-way solenoid valves feature pilot diaphragm construction together with a high flow rate. Eliminating all sliding parts, these valves are highly resistant to dust, water deposits and other foreign matter. Capable of working at minimal differential pressures, these valves demonstrate outstanding dependability. For special applications, contact your Valcor customer service representative.



Specifications

Operating Mode	Normally Closed	De-energized, the flow is from the cylinder port through the exhaust port. Energized, the flow is from the inlet port through the cylinder port.	
	Normally Open	De-energized, the flow is from the inlet port through the cylinder port. Energized, the flow is from the cylinder port through the exhaust port.	
Pipe Size (in.)	3/8 • 1/2		
Orifice Size (in.)	5/8		
Body	Brass		
Sealing/Seat	Buna N, Viton		
Poppet Fork	Polyacetals		
Cartridge	Polyacetals		
Housing	Standard	Watertight NEMA 4	
	Options	Explosion proof NEMA 7, Open Frame, Junction box	
Available Voltages	AC24V 60Hz	12V DC	
	AC110V 50Hz AC120V 60Hz		
	AC220V 50Hz AC240V 60Hz	24/DC	
Voltage Tolerance	+10% to -15% of applicable voltage		
Coil	Class F and H		
Lead Length	24 inch		
Temperature Ratings	Ambient Temp. -40°F to 150°F max. with Class F Coil; 175°F max. with Class H Coil.		
	Fluid Temp. See the "HOW TO ORDER" Table.		
Mounting position	Mounts in any position		
Agency Listings	Consult Factory		
Options	Manual Override, Mounting Bracket, Neon Lamp, Surge Suppressor		

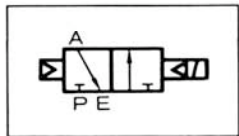
•Consult the factory for specifications other than those listed above.



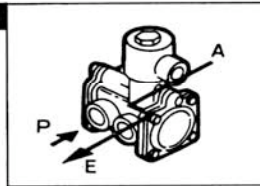
Valve Selection Sheet

Pipe Size (in.) NPT	Orifice (in.)	Cv	Operating Pressure Differential		Max. Fluid Temp. °F	Housing	Power Consumption (W)		Coil Insulation	Voltage 60 HZ	Model Code	
			Min PSI	Max. PSI			AC	DC				
				Air/Gas, Water								
				AC								DC

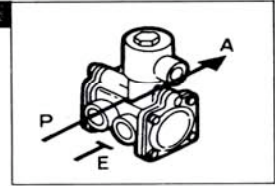
Normally Closed



De-energized

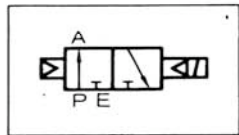


Energized

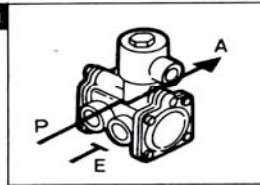


3/8	5/8	3.3	7	150	150	180	G	10	10	F	120	SV323GF02N5CG4
1/2	5/8	4.4	7	150	150	180	G	10	10	F	120	SV323GF02N5DG4

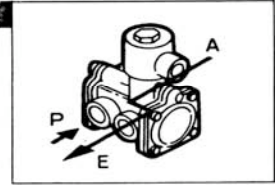
Normally Open



De-energized



Energized



3/8	5/8	3.3	7	150	150	180	G	10	10	F	120	SV424GF02N5CG4
1/2	5/8	4.4	7	150	150	180	G	10	10	F	120	SV424GF02N5DG4

Model Code

S V 3 2 3

G F 0 2 N 5 C G 4

1-2-3-4-5		6	7	8-9		10	11	12	13-14	15
Series	Operating Mode	Housing	Coil Insulation	Applicable Voltage		Seat Material	Body Code	Pipe Connection (NPT)	Orifice Size	Option
SV323	Normally Closed	A= Conduit	F= Class F	02= 120V/60HZ 110V/50HZ	N= Buna N	5= Brass	C= 3/8	G4= 5/8	M= Manual Override	
SV424	Normally Open	P= Open Frame	H= Class H	04= 220V/60HZ 220V/50HZ	V= Viton		D= 1/2		K= Mounting Bracket	
		B= Grommet		01= 24V/60HZ	E= EPR*				N= Neon Lamp	
		X= Explosion Proof NEMA 7		15= 12V DC	C= EPR				Z= Surge Suppressor	
		S= Junction Box		16= 24V DC	L= Viton*				N and Z apply to housing with terminals only	
		G= Watertight NEMA 4								

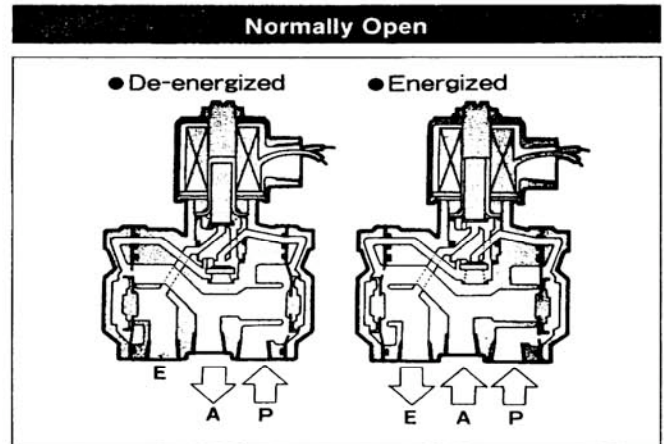
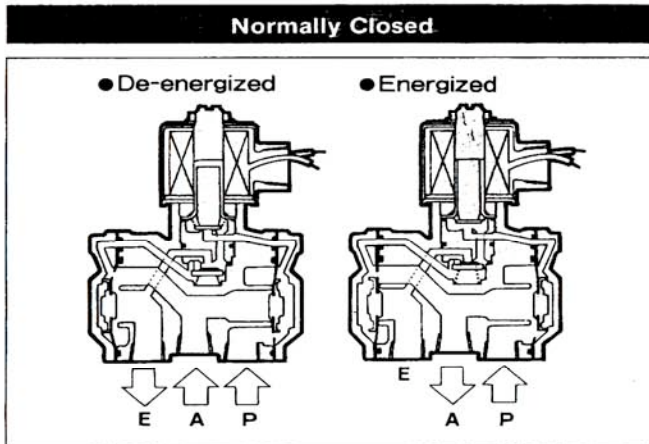
Coil Data

Note: * Standard shading coil material is copper. "E*", "L*" has silver shading coil.

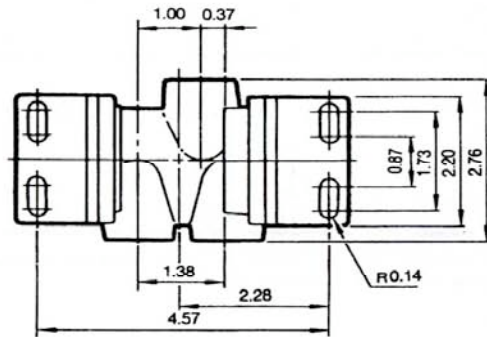
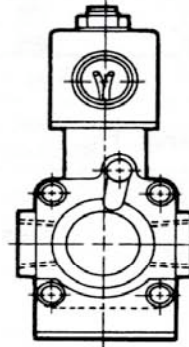
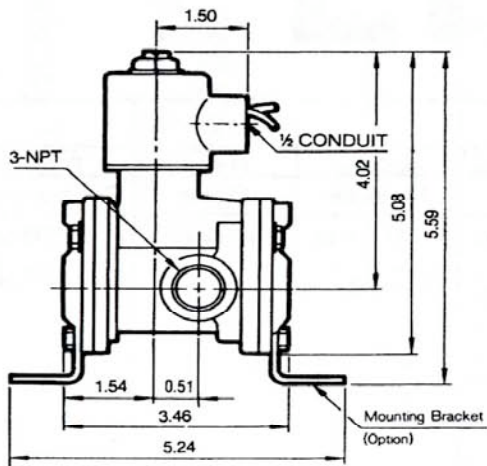
Frequency (HZ)		50	60
Power (VA)	Inrush	37	30
	Holding	18	13
Power Consumption (W)	AC	10	
	DC	10	

Note: AC power consumption at 110V/50HZ, 120V/60HZ data.

Construction / Operation



External Dimensions



Model	Weight (lb)
SV323	3.5
SV424	3.5



Valcor Scientific

Valcor Engineering Corporation®

2 Lawrence Road • Springfield, New Jersey 07081

973-467-8400 • Fax: 973-467-9592

valcorscientific@valcor.com • www.valcor.com

© 2002 Valcor Engineering Corporation® Printed in USA

Scientific Business Unit