



Valcor Scientific

For more information,
call us at 1-973-467-8400



2-way Normally Closed Dri-Solenoid Valve (Model SV74)

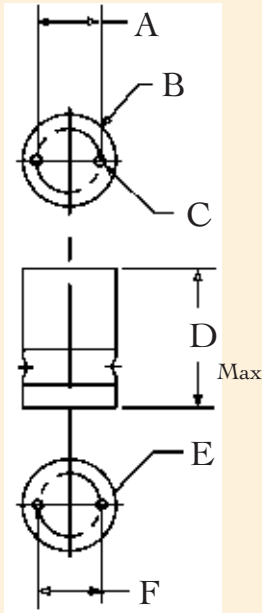
Performance specifications:

Model #	Orifice Size	PSIG	Voltage (1)	Watts	Internal Vol.	Ports
SV74P61T-1	0.040" (1.016)	VAC-30 (2 bar)	12	1.00	14µl	10-32
SV74P25T-1	0.062" (1.575)	VAC-30 (2 bar)	12	1.50	41µl	1/4-28
SV74P60T-1	0.095" (2.413)	VAC-30 (2 bar)	12	4.20	103µl	1/4-28
SV74P48T-1	0.156" (3.962)	VAC-30 (2 bar)	12	7.20	335µl	1/8 NPT
SV74P61T-2	0.040" (1.016)	VAC-30 (2 bar)	24	1.00	14µl	10-32
SV74P25T-2	0.062" (1.575)	VAC-30 (2 bar)	24	1.50	41µl	1/4-28
SV74P60T-2	0.095" (2.413)	VAC-30 (2 bar)	24	4.20	103µl	1/4-28
SV74P48T-2	0.156" (3.962)	VAC-30 (2 bar)	24	7.20	335µl	1/8 NPT

(1) Alternate voltages of 6VDC ('-0') and 115V/ 60 Hz ('-5') available upon request.

*Also available with PEEK ('P') or PPS ('S') bodies. High Pressure ('HP') version available – to 100 PSIG.

(Metric dimensions in parenthesis)



Outline dimensions:

Model #	A	B	C	D	E	F
SV74P61T	.500 (12.7)	ø.750 (ø19.0)	#2-56	1.15 (29.2)	#2-56	.500 (12.7)
SV74P25T	.687 (17.44)	ø1.00 (ø25.4)	#4-40	1.50 (38.1)	#4-40	.687 (17.44)
SV74P60T	.884 (22.45)	ø1.25 (ø31.75)	#4-40	1.78 (45.2)	#4-40	.884 (22.45)
SV74P48T	1.125 (28.58)	ø1.50 (ø38.1)	#4-40	2.10 (53.3)	#4-40	1.125 (28.58)

(Metric dimensions in parenthesis)