



LEVEL-TEK MODEL 5318B



Probe shown for illustration only.
Must be ordered separately.

GENERAL DESCRIPTION

The Robertshaw Model 5318B Level-Tek is a RF capacitance point (On/Off) level switch, that employs all solid state electronics for detecting predetermined product level changes in tanks, sumps, silos and other vessels or containers. The Model 5318B is capable of detecting a variety of products, including liquids, powders, granular, lump and flake materials. The product can be conductive or non-conductive.

The Model 5318B is self-contained and uses microprocessor based digital circuits to ensure long-term stability, reliability and reduced maintenance. Control signals are provided through the contacts of a DPDT relay. The instrument features adjustable time-delays that are individually adjustable "Alarm" and "Return-to-Normal". There are either fixed or adjustable differential settings available. The unit is available for either AC or DC supply voltages.

PRICIPLE OF OPERATION

The standard Model 5318B Level-Tek mounts directly on a Robertshaw Probe Assembly, which is installed in the tank or other container. A remote mount option (maximum 15 feet) is available. The Level-Tek unit senses changes in product level as a function of the "true" capacitance change between the probe element and the wall of the container.

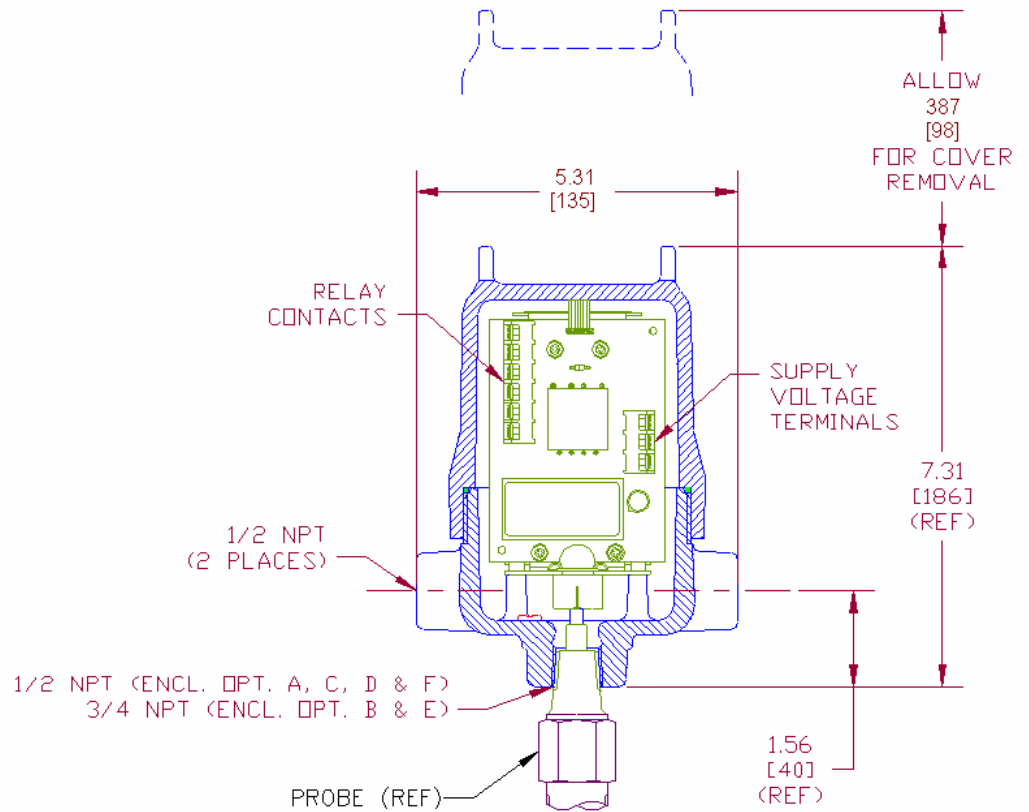
Instrument setup and calibration are done using pushbuttons and an integral, internal, 2-line by 8-character LCD display. Setpoint calibration can be done without requiring level changes in the vessel.

The primary measuring circuit employs Robertshaw's patented Pulse Frequency Modulation, PFM, technology. The 12 VDC and 24 VDC powered units accept voltages from 9 to 18V and 18 to 36V, respectively, while the universal input AC powered unit accepts 85 to 265 V. No jumper, or switch, changes are required.

FEATURES AND BENEFITS

- **Versatile - Suits Many Applications-**
Enclosure meets explosion-proof and weather-tight requirements. Choice of supply voltages. Adjustable time delays are standard.
- **All Solid-State Construction -**
Use of digital solid-state circuits insures long-term stability, reliability, and reduced maintenance.
- **Simplified Installation -**
Self-contained unit may be oriented in any position. Mounts directly on installed Robertshaw Probe Assembly, connected to probe element by rugged, and convenient, disconnect pin.
- **Field Selectable Operational Modes -**
High or low fail-safe operation established by means of mode switches.
- **Ease of Calibration and Adjustment -**
Built-in solid-state light aids in calibration (no external meter required).
- **Convenient Design for Wiring and Maintenance -**
Plug-in chassis assembly provides easy access to wiring and terminal board. Heavy-duty relay.
- **Remote Mount Option-**
(15 feet maximum from probe.)
- **Safety Approvals-**

DIMENSIONS



CUSTOMER CONNECTIONS

| RELAY CONTACTS* | |
|-----------------|-----------------------|
| TERMINAL | DESCRIPTION |
| N.C. 1 | Normally Closed No. 1 |
| C 1 | Common No. 1 |
| N.O. 1 | Normally Open No. 1 |
| N.C. 2 | Normally Closed No. 2 |
| C 2 | Common No. 2 |
| N.O. 2 | Normally Open No. 2 |

| SUPPLY VOLTAGE (See Rating Plate) | |
|--------------------------------------|------------------------------|
| TERMINAL | DESCRIPTION |
| GND | Ground |
| NEU (+) | Power Input (supply voltage) |
| HOT (-) | |

* Control relay contact designations are shown with relay in the de-energized condition. The relay is normally energized and becomes de-energized when level or process reaches the control point.

ACCESSORIES

COOLING EXTENSIONS (not shown)

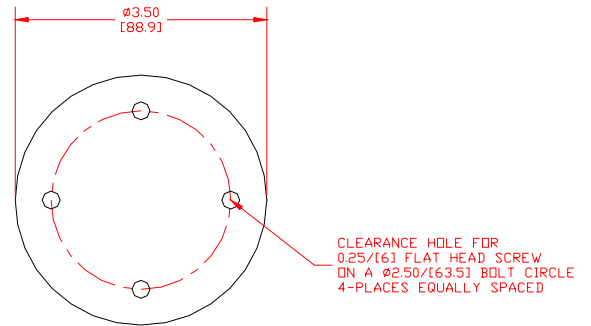
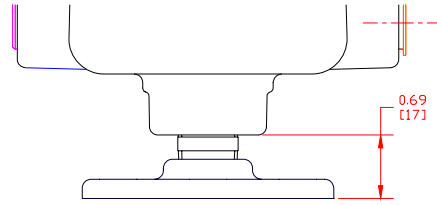
If the temperature within a vessel can cause the electronics in the model 5318B to be subjected to a temperature greater than its rating, consideration should be given to using a cooling extension. Refer to the Product Specification sheet for cooling extensions for more information.

REMOTE MOUNTING CABLES

If a lack of head room above the model 5318B may prevent cover removal, or if a high ambient temperature at the vessel will subject the model 5318B to a temperature greater than its rating, the model 5318B may be remote mounted with the use of a special cable.

The remote mounting cable consists of a stainless steel gland which screws into the model 5318B, a Teflon insulated cable rated for 350° F (177° C), and an aluminum conduit outlet box for cable termination of the cable at the probe. Cable length should be kept as short as possible. Maximum length is 15 feet (4.5 m). The remote mounting cables are not CSA Certified and their use may void the explosion proof rating of the instrument.

DIMENSIONS (optional mounting)



REMOTE MOUNTING DETAILS
 (ENCLOSURE OPTION C & F)

CLEARANCE HOLE FOR
 0.25/16J FLAT HEAD SCREW
 ON A Ø2.50/163.51 BOLT CIRCLE
 4-PLACES EQUALLY SPACED

CABLES FOR 5318B

| PART NUMBER | DESCRIPTION |
|--------------|--|
| 032KX050-XX* | Coaxial cable with conduit outlet box. Meets NEMA 4. |
| 032KX080-XX* | Coaxial cable with conduit outlet box painted with a gray epoxy enamel. Meets NEMA 4X. |

* Replace XX with length in feet.
 Maximum length 15 feet (4.5 m)



Robertshaw Industrial Products
 1602 Mustang Drive
 Maryville, Tennessee 37801
 Phone: (865) 981-3100 Fax: (865) 981-3168
<http://www.robertshawindustrial.com>