

Programming



- Program or read meter settings
- Save meter profiles for cloning
- Use profiles for reporting

Specifications

System Requirements: Windows® 95/98/ME/2000/XP

Communications: RS-232 Adapter or RS-422/485 Adapter

Meter Address: 00 - 99

Reports:

- Data logging: Save as HTML file format
- Configuration: Save as PDC file format, export to HTML, or print configuration

Baud Rate: Fixed 2400 bps

Configuration: One meter at a time

ORDERING INFORMATION

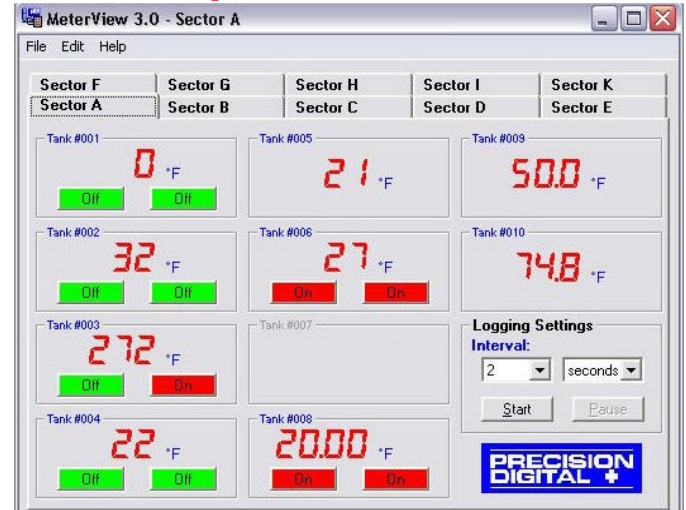
| Model | Description | Number of meters |
|-----------|---------------|--------------------|
| PDA7503-1 | MeterView 3.0 | One |
| PDA7503-2 | MeterView 3.0 | One to ten |
| PDA7503-3 | MeterView 3.0 | One to one hundred |

Accessories

| Model | Description |
|---------|--|
| PDA7420 | 7' (2.1 m) Standard Modular Cable |
| PDA7232 | RS-232 Serial Adapter (includes PDA7420) |
| PDA7422 | RS-422/485 Serial Adapter (includes PDA7420) |

Your local distributor is:

Data Acquisition



- Save data to a file
- Monitor up to 10 meters per tab
- 10 tabs = 100 meter total capacity
- Acknowledge relays

Sample Data Logging File

PD765 Log File

Name: C:\MV3logfile.htm

Created: 2/26/2003 5:34:12 PM

Serial Port: COM 1

Connection speed: 2400 Baud

Logging rate:

1 update every 10 seconds

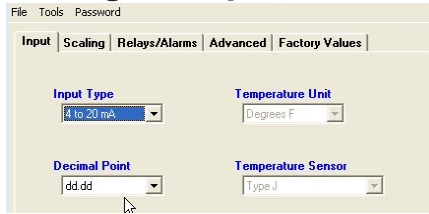
| Date & Time | Tag Number | Address | Display | Units | Relay 1 | Relay 2 |
|----------------------|--------------|---------|---------|-------|---------|---------|
| 2/26/2003 5:34:12 PM | Tank 1 Level | 06 | 17.70 | Feet | P1 On | P2 Off |
| 2/26/2003 5:34:12 PM | Tank 2 Level | 07 | 18.18 | Feet | P3 Off | P4 Off |
| 2/26/2003 5:34:12 PM | Tank 3 Level | 08 | 20.54 | Feet | P5 On | P6 Off |
| 2/26/2003 5:34:12 PM | Tank 1 Temp | 09 | 74 | °F | Off | Off |
| 2/26/2003 5:34:12 PM | Tank 2 Temp | 10 | 72 | °F | Off | Off |
| 2/26/2003 5:34:12 PM | Tank 3 Temp | 11 | 72 | °F | Off | Off |
| 2/26/2003 5:34:22 PM | Tank 1 Level | 06 | 17.58 | Feet | P1 On | P2 Off |
| 2/26/2003 5:34:22 PM | Tank 2 Level | 07 | 18.04 | Feet | P3 Off | P4 Off |
| 2/26/2003 5:34:22 PM | Tank 3 Level | 08 | 19.79 | Feet | P5 Off | P6 Off |
| 2/26/2003 5:34:22 PM | Tank 1 Temp | 09 | 74 | °F | Off | Off |
| 2/26/2003 5:34:22 PM | Tank 2 Temp | 10 | 72 | °F | Off | Off |
| 2/26/2003 5:34:22 PM | Tank 3 Temp | 11 | 72 | °F | Off | Off |
| 2/26/2003 5:34:32 PM | Tank 1 Level | 06 | 16.47 | Feet | P1 On | P2 Off |
| 2/26/2003 5:34:32 PM | Tank 2 Level | 07 | 16.87 | Feet | P3 Off | P4 Off |
| 2/26/2003 5:34:32 PM | Tank 3 Level | 08 | 17.10 | Feet | P5 Off | P6 Off |
| 2/26/2003 5:34:32 PM | Tank 1 Temp | 09 | 74 | °F | Off | Off |

Great for tank level monitoring!



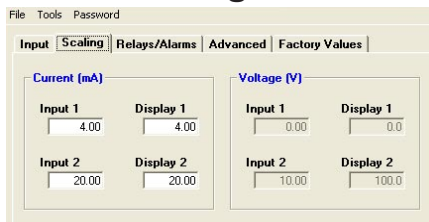
Programming

Configure Input



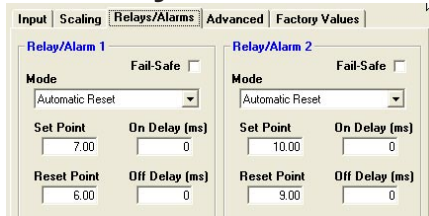
- Input type
- Decimal point
- Temp units
- Sensor type

Meter Scaling



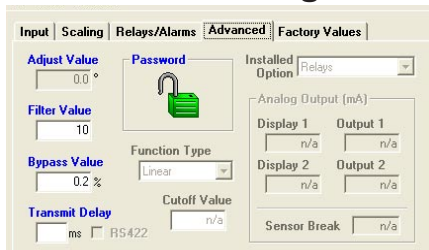
- Scale input
- No cryptic codes
- Simple to use

Set Relays/Alarms



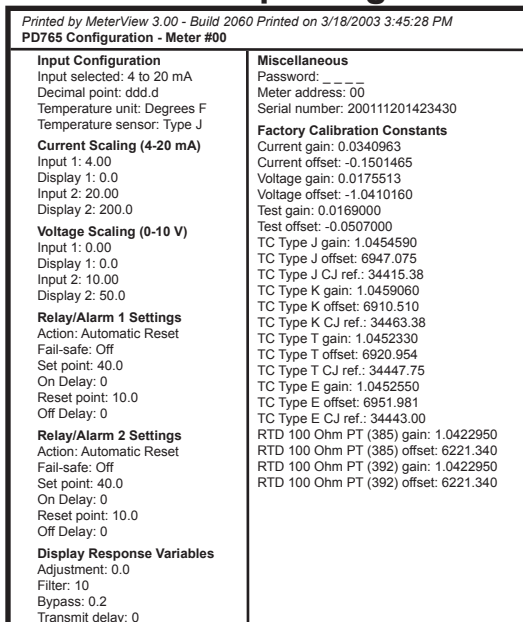
- Select mode
- Set/reset points
- Fail-safe operation
- On & off delays

Advanced Settings



- Password
- Filter & bypass
- Transmit delay
- Function type
- Cutoff value

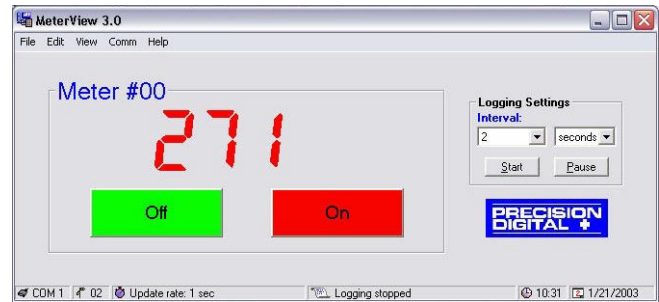
Calibration Reporting



Data Acquisition

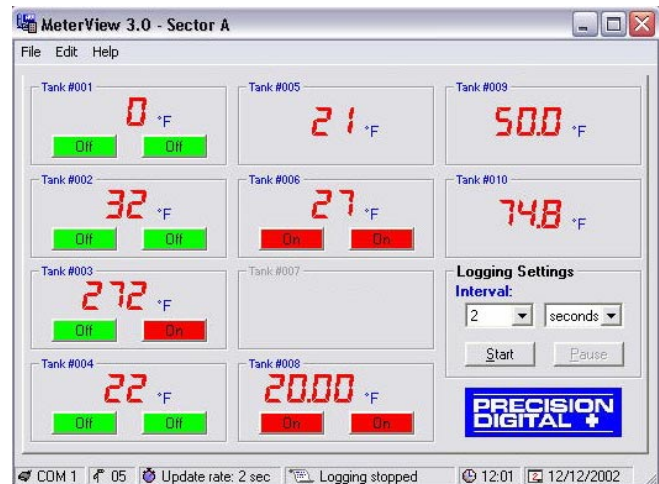
Model PDA7503-1

Monitor one meter



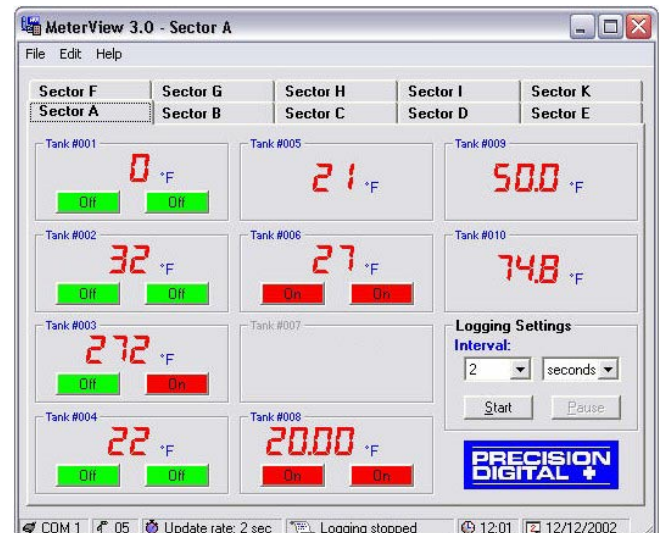
Model PDA7503-2

Monitor one to ten meters



Model PDA7503-3

Monitor one to one hundred meters



LDS7503_A 03/03