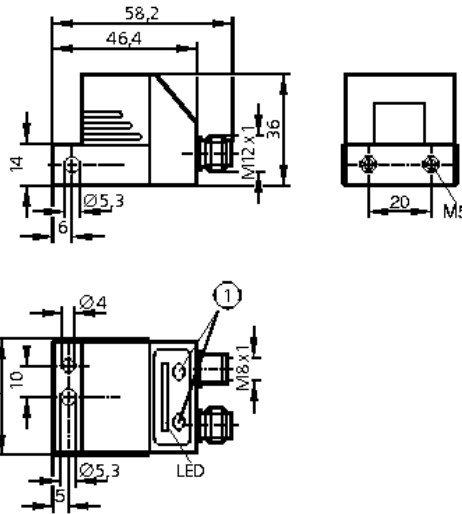


Diagnostic systems

VB1001

Rolling element bearing monitor
Connection via M12 x 1 and M8 x 1 connectors

Spectral analysis
Envelope-curve FFT
Trend analysis



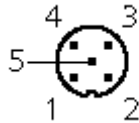
1: Programming buttons

Application	Diagnosis of up to two different rolling element bearings
Electrical design	DC PNP
Operating voltage [V]	10...32 DC
Current consumption [mA]	100 (24V DC) *
Measuring range [g]	± 25 **)
Sensing principle	micromechanical accelerometer / capacitive measuring principle / one measurement axis
Overload protection [g]	100
Minimum measuring time [s]	0.8
Frequency range [Hz]	3...6000
Spectral resolution [Hz]	1.25
Monitoring range [rpm]	500...6000 (the actual rotational speed range depends on the type of the rolling element bearing and can therefore differ)

VB1001

Operating temperature [°C]	-30...60
Protection	IP 67, III
EMC	IEC 1000-4-2/3/4/6
Housing material	housing: diecast zinc nickel-plated; keypad: polyester

Wiring



M12
connector
(electrical
connection)
Pin 1: supply +
Pin 2: red function; switching output 2 / 100 mA / NO/NC programmable
Pin 3: supply -
Pin 4: yellow function; switching output 1 / 100 mA / NO/NC programmable
Pin 5: rotational speed, 0...20 mA

Wiring

M8 connector (RS-232
communication)

Pin 1: -
Pin 2: TxD
Pin 3: GND
Pin 4: RxD



Remarks

*) plus optional external pulse pick-up
**) nominal ± 20
Pin 2 (switching output 2) and pin 4 (switching output 1) can only be programmed in pairs