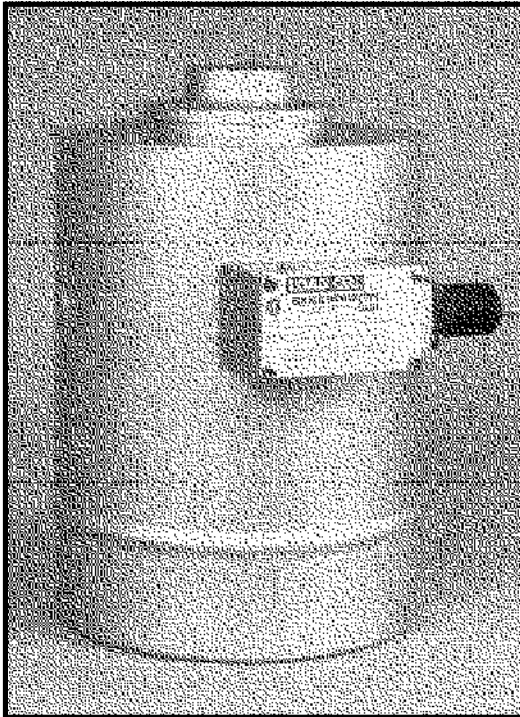


C2G1-H High Temperature Load Cell

Applications:

High Temperature Environments



- Operational to 400° F
- Compact - Rugged
- Low Deflection
- Environmentally Sealed
- 20,000 to 200,000 Pound Capacities



Product Description

C2G1-H load cells operate at temperatures up to 400°F without needing external cooling. Ability to withstand extreme heat makes C2G1-H cells the perfect choice for weighing molten metals. Other applications include tank and scale installations in locations that are subject to intense heat.

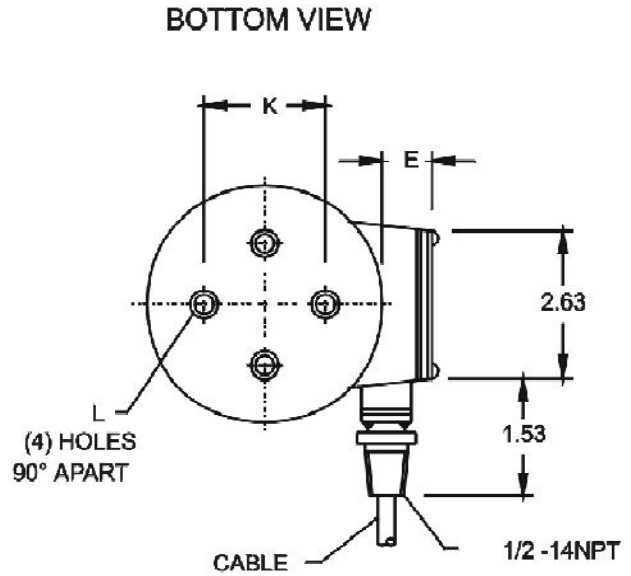
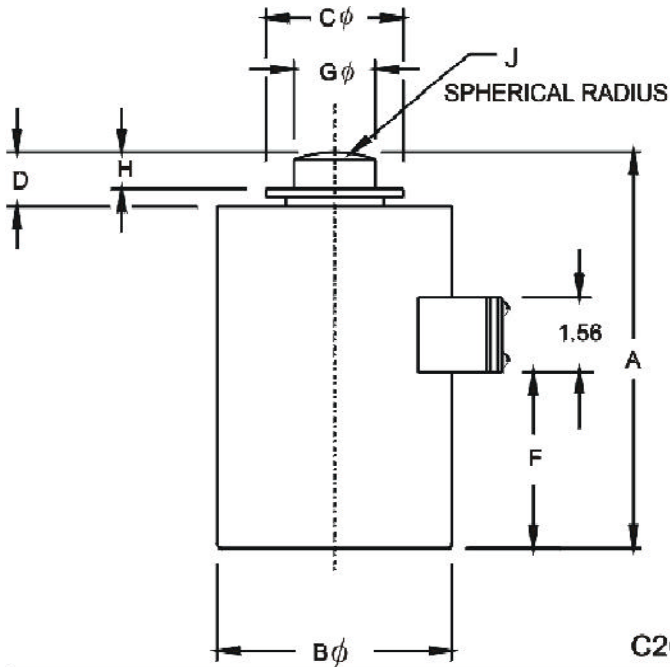
Double diaphragm fabrication and gage linearizing combine to offer precision performance and long term reliability. Low deflection and superior sealing guarantee trouble-free operation. Relatively low mass and small deflection under load, produce excellent frequency response. Overall, C2G1-H cells perform superbly in severe environments where other transducers cannot.

Specifications

Performance	
Rated Output	2mV/V +/-0.25%
Non-linearity - % RO	0.20
Hysteresis - % RO	0.10
Repeatability - %RO	0.10
Creep - %RO (20 min.)	0.10
Electrical	
Recommended Excitation	10V ac-dc
Zero Balance - %RO	2.5
Input Resistance (ohms)	375 +/-8 @ 400°F
Output Resistance (ohms)	350 +/-10.0
Number of Bridges	single
Min. Insulation Resistance - megohms (@ 50 Vdc)	
Bridge to Ground	1000 megohms
Shield to Ground	1000 megohms
Electrical Connection	20 foot cable
Temperature	
Safe Range	+15 to +400°F
Compensated Range	+15 to +400°F
Effect on Zero Balance	0.0025 %RO/°F
Effect on Rated Output	0.005% Load/°F
Adverse Load Ratings	
Safe Overload - %R.O.	150
Ultimate Overload -%R.O.	300

Thermo BLH
An ISO 9001 Registered Company

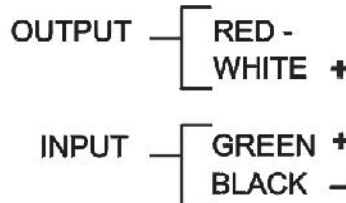
Product Outline Dimensions



C2G1-H

CAPACITY (lbs)	A	Bφ	Cφ	D	E	F	Gφ	H	J	K	L
20,000	7 1/2	4 1/2	2 1/4	3/4	7/8	3 7/16	1 1/4	1/2	6	2 3/8	3/8-24UNF-2B X 3/8 DP
50,000	7 1/2	4 1/2	2 1/4	3/4	7/8	3 7/16	1 1/4	1/2	6	2 3/8	3/8-24UNF-2B X 3/8 DP
100,000	9 1/8	6	3 1/8	1 1/16	1 1/32	4 3/4	1 3/4	5/8	12	4	1/2-20UNF-2B X 3/4 DP
200,000	11 5/8	8	4 1/2	1 1/16	1 1/8	6 1/4	2 1/2	5/8	12	5 1/2	5/8-18UNF-2B X 1 DP

CABLE COLOR CODE



BLH is continually seeking to improve product quality and performance. Specifications may change accordingly. Dimensions shown in inches.

Main Office

75 Shawmut Road - Canton, MA 02021
Tel: (781) 821-2000 - Fax: (781) 828-1451
web site: <http://www.blh.com>

ISO 9001

Registered

Canada

41 Horner Ave, Unit 5
Toronto, Ontario M8Z 4X4
Tel: (416) 251-2554 - Fax: (416) 251-2690
Toll Free: (800) 567-6098