

Field^{IT}
Actuators & Positioners
Intelligent Positioners
Field Mount Units / Accessories
TZID, TZID Ex, TZID SS

- **Digital Communications:** HART® compatible via 4-20 mA or FSK modem. Local communication via RS232 interface
- **User Friendly:** Operator interface with menu and simple push-buttons on indicator panel. Expanded configuration via PC or Laptop with Smart Vision® software.
- **Selectable Choice of Transfer Characteristics:** Linear, equal percentage or customized curve with 21 points configurable in both X and Y axis.
- **Easy Setup and Calibration:** AUTOSTROKE function initializes valve without manual calibration adjustments. Automatic adaptation to actuators of different sizes
- **Available for Either Linear or Rotary Motion:** single or double acting with either “fail-in-place” or “fail open/close”
- **Non-contact Position Feedback:** Via digital communication standard. Optional 4-20 mA or digital output. Manual output contacts also optional
- **Loop Powered 2-wire 4-20 mA Device:** No external power supply required. Low compliance voltage (9.3 VDC).
- **Immune to Shock, Vibration, EMF, RFI:** uses same patented concept as the Sensycon 20/06 I/P
- **Ideal for Harsh Environments:** Rugged compact NEMA 4X housing. Wide operating temperature range: -40°F to +180°F (-40°C to +85°C).



Series TZID, TZID Ex, TZID SS
Field Mount Units/Accessories

Intelligent Positioners Field Mount Units/Accessories

The TZID Intelligent Positioners is a versatile electro-pneumatic positioner that has digital communications, easily configurable, and suitable for field installation in arsh environments.

The Positioner provides modulating control of single-acting spring return and double pneumatic actuators. The microprocessor based design allows monitoring of the final control and element and two way communication via an RS232 interface or HART® link. Zero and span settings are achieved by initiating Autostroke which also determines the optimum calibration settings based on the specific process control conditions.

The TZID Intelligent Positioner is available with a number of selectable features and options. These include: Fail-in-place, analog or digital position feedback and special 316 stainless steel housing for extremely harsh and aggressive environments. The stainless steel version is especially suitable for a variety of industries including Chemical, Pulp & Paper, Pharmaceutical, Mining, Petroleum Refining, and Offshore Operations.

Engineering Specifications

Input

Signal Range	4-20 mA, two-wire Partial ranges from 4 mA, span as required Configurable (e.g. for split/ range operation)
Compliance voltages	9.3 V DC (10.6 V DC for Ex version)
Resistance	465 Ω at 20 mA (530 Ω for Ex version)

Output

Control pressure	0-90 psi (0-6 bar)
Air performance	6 kg/h = 5Nm ³ /h = 3 scfm at 20 psi supply pressure 13 kg/h = 11Nm ³ /H = 6.5 scfm at 90 psi supply pressure
Function	Single or double acting
Effective direction	Scanned and set automatically in the course of automatic identification (self-balancing program); positioning direction with increasing air pressure

Shut-off point

Adjustable for 0...20% of signal range (if the valve falls below the set value then the positioner immediately moves the valve to the closed position)

Positioning travel (position feedback)

Rotation angle

Max. 60° for linear valve and max. 90° for rotary valve. The rotation angle for the full control path is automatically derived in the course of identification (self-balancing program).

Positioning time for traversing the full path

Can be modulated over and above the natural actuating time of the valve with an electronic parameter in the range 0...100 seconds (determinable separately for both positioning directions)

Actuating time monitoring

Time parameter adjustable from 0...100 seconds (If the positioner is unable to move the control deviation to the dead band within the set time then a message is issued both via the communication terminal and through the optional "digital feedback" module).

Positioning path limiting

Min. - Max. limits freely selectable within 0...100% of positioning travel.

Power Supply

Instrument Air

Oil, water and dust-free to DIN/ISO 8573-1

Supply pressure

Max. particle size 5 microns
20 to 90 PSI (1.4 to 6 bar)
Caution: Do not exceed the maximum working pressure of the actuator!

Air requirement

<0.01 scfm at 20 psi supply

Transmission data and influencing parameters

Characteristic (effective direction)

Rising: actuating signal
4...20 mA / control point
0...100%

Falling: actuating signal
20...4 mA / control point
0...100%

Transmission data and influencing parameters

Characteristic	Linear or equal percentage (1:25 or 1:50 or 25:1) or freely definable with 21 interpolation points
Characteristic deviation	< 0.5%
Dead band	Adjustable from 0.2 to 10%
Resolution	8000 steps
Scanning period	20 msec
Effect of ambient temperature	<0.5% / 10K
Effect of mounting position	Negligible
EMC	EMC directive 89/336/EEC as of May 1989
Interface	RS232 HART protocol

Environmental Capabilities

Ambient temperature	-40°F to +85°C for operation, storage and transport
Explosion protection	CENELEC: EEx ia IIC T4/T5/T6 British: EXN IIC T6 FM: Intrinsic safe: Class I, II, III, Div 1, Group A-G Non-Incendive: Class I, II, III, Div 2, Group A-G CSA: Intrinsic safe: Class I, Div 1, Group A-D Non-Incendive: Class I, Div 1, Group A-D

Case

Material	Aluminum, Epoxy-coated
Degree of protection	NEMA 4X
Connections, Electrical	Screw terminals, for 2.5 mm ² , with 1/2" NPT
Weight	7 lbs.
Mounting position	As required

Options

Supplementary module for analog position feedback
Signal range: 4...20 mA, two-wire
Power supply: 12...25 V DC Normal or Ex protected (See Specifications for further information on Ex protection) In addition a signal control to 3.5 or 21.5 mA can be activated (definable through configuration) if there is an error in the self-test routine or the alarm value of the actuation time monitoring is exceeded.

Supplementary module for digital feedback
2 switches for min. and max. control points
Alarm values adjustable within 0...100% positioning travel/rotation angle and 1 switch for error message in self-test routine and for alarm signal if actuating time is exceeded.
Control circuit meets DIN 19234 (Namur)
Normal or Ex protected (See Specifications for further information on Ex protection) Control voltage 8...25 V DC
Control current <1.2 mA for switching state "0"
Control current >2.1 mA for switching state "1"

Preliminary data	Basic Unit	Module for feedback	
		Analog	Digital
Effective internal capacitance C_i	<1.2 nF	<120 nF	*
Effective internal Inductance L_i	<50 µH	*	*
Max. values In case of Fault			
V_i	30V 29.6V	29.6V	
I_i	150 mA	203 mA	203V
P_i	1100 mW	1500 mW	1500 mW

* = values negligible

Ambient temperature	T4	max. 85°C
	T5	max. 55°C
	T6	max. 40°C

<p>Mechanical kit for digital feedback</p>	<p>2-slot type initiators SJ2-SN (safety engineered) for min. and max. control point Alarm values adjustable within 0...100%, positioning travel/rotation angle adjustable (alarm independent of the software and electronics of the positioner) Control circuit meets DIN 19234 (Namur) Normal or Ex protected (See Specifications for further information on Ex protection) Control voltage 5...25 V DC Control current <1 mA for switching state "0" Control current >3 mA for switching state "1"</p>	<p>Pressure gauge block with terminal or 1/4" NPT</p>	<p>Including attachments for direct mounting plus, optionally - Pressure gauge Ø40 mm Case, plastic, black IP 65 Range 0...4 bar/0...psi or 0...10 bar/0...140 psi (2 x for single action, 3 x for double action)</p>
		<p>Filter</p>	<p>Coalescing filter type removes liquid aerosols and sub-micron particles 1/4" NPT process connection 30 SCFM flow capacity.</p>
		<p>Regulator</p>	<p>Quick response and accurate pressure regulation. 1/4" NPT process connection 30 SCFM flow capacity</p>
<p>Accessories</p>		<p>PC adaptor for communication</p>	<p>LCI adapter for RS232 FSK modem for HART® communication</p>
<p>Add-on Kit for linear actuators (Travel)</p>	<p>(Lateral attachment meets DIN/IEC 534/Namur)</p>	<p>Operator interface</p>	<p>Smart Vision</p>
<p>170 mm lever for linear actuators, stroke 10... 150 mm.</p>			
<p>Add-on bracket for rotary actuators 90°</p>	<p>(Attachment meets VDI/VDE 3845) Dimension A/B = 80/20 80/30 - 130/30 -or 130/50 mm</p>		

The Concept

The TZID positioner belongs to a new intelligent and configurable generation of devices. High-tech electronics are coupled with a robust mechanical construction on the pneumatic side to yield an optimal design: The TZID from ABB.

The TZID is a 2-wire device requiring only a base current of 4 mA to power the electronics. This is derived from the 4 - 20 mA input signal. The only external energy connection required is compressed air. The TZID consumes only 0.01 SCFM. The I/P conversion is done by the same patented concept as the SENSYCON 22/06 I/P which has a field-proven immunity to shock, vibration, EMF and RFI.

The transmission of the movement of the actuator to the positioner is accomplished by utilizing a cam and a patented non-contact inductive sensor. Thus the only moving part in the TZID is the axis rotated by the actuator on which the cam is mounted. The result is a very low wear rate and insensitivity to shock and vibration. An ideal combination for operation and maintenance. The same analog signal produced by the inductive signal not only provides the position feedback for the positioner control but can also be used to provide the optional position feedback and alarm limit outputs.

The signal modulated by the I/P module is continuous and eliminates the dead time between digital switching and enables a precise and sensitive control of the control point. Modulation with automatic adaptation to actuators of different size occurs in a very short time. Thus the TZID is ideal for valves of all sizes without any special manipulation.

The TZID is housed in a robust NEMA 4X aluminum housing with epoxy coating. The covers are hinged and ribbed and gasketed to maintain easy access and enclosure integrity. A separate chamber is provided for electrical terminations. To compliment its suitability for harsh environments a wide operating temperature range of -40°F to 185°F (-40°C to 85°C) is provided.

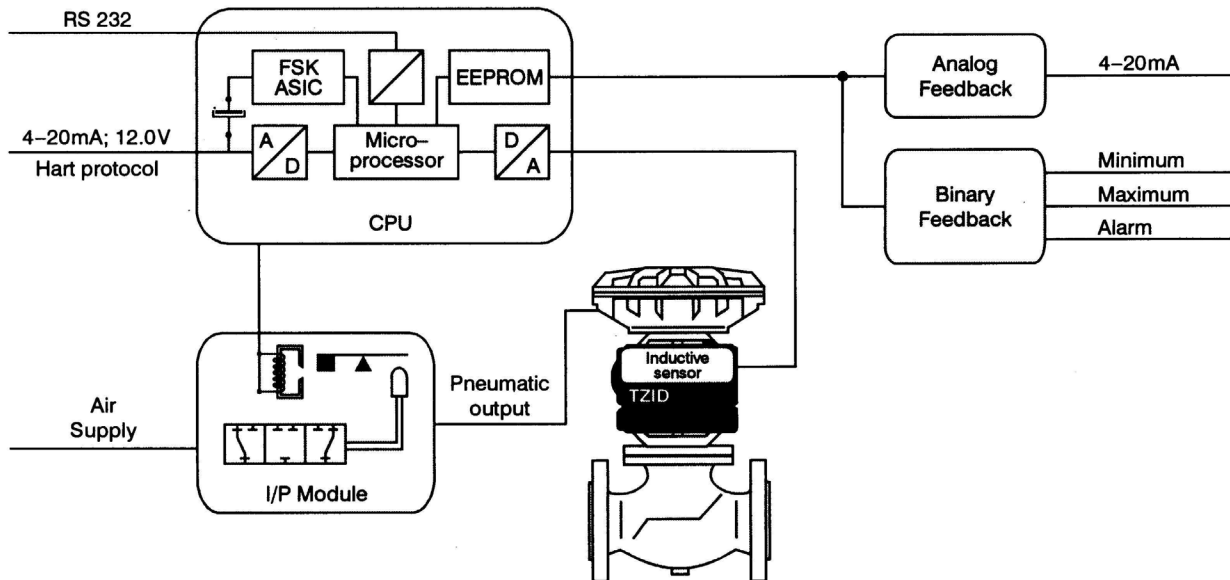
Special Application with remove position sensor

The TZID positioner is designed for a wide operating temperature range of -40°F to +185°F and has high shock and vibration immunity (<1% up to 10g/80Hz). Optionally for extreme applications such as high temperature environments or high process vibrations the TZID can be provided with a remote mounted positioner. The remote configuration consist of two TZID housings and a intrconnecting cable.

Description

- One housing contains the positioner sensor/cam arrangement as well as the mounting interface for linear or rotary actuators (depending on Nomenclature).
- The second housing contains the electronics and I/P converter. This enclosure also includes the signal terminals and pressure connections.
- The two enclosures are electrically connected by a shielded 4-wire cable with a standard length of 32 ft (10m).
- The housing containing the electronics is limited to ambient temperatures of up to 185°F (85°C) while the position sensor housing can be mounted in an ambient temperature of up to 230°F (110°C).

TZID Schematic Diagram



Operation / Communication

The TZID positioner is provided with an operator panel for local control and input of certain parameters. Located on this panel is a 3-1/2 digit LCD display, 3 push-buttons and 1 rotary switch. Directions and a menu are printed on the panel to provide for easy reference and operation.

Digital communication provides continuous monitoring, and read out and adjustment of all operating parameters, even during operation. As the parameters configurable by the operator are limited, a high degree of operating security and integrity is provided via remote control from the control room.

Communication with the TZID positioner can be accomplished by either a local interface or via HART (FSK) protocol.

The local interface is to a standard RS232 through a connection port provided on the operator panel. Communication and complete configuration can be done with the local interface without the need for an input signal.

Communication using HART protocol is accomplished over the 4-20 mA input signal or in a bus structure but does require at least a 4 mA signal. The IBIS software provides a standard application for the TZID for easy configuration, monitoring and file management.

Accessory items needed for connection to a PC or laptop can be supplied if required.

The Computer / Program

The TZID program is run on a 16-bit CPU. The scanning period is 20 milliseconds. Configuration data is stored in EEPROM and is retained in the event of power failure. A/D conversion is with a resolution of 8000 steps. In addition to the control algorithm for setting the control position, the program execution also includes:

- Automatic identification of the valve in terms of the positioning travel (Stroke length or angle of rotation) and the effective direction (Valve action - direct or reverse)
- Automatic determining and setting of the control parameters (AUTOSTROKE)
- A self-test routine with error messages at the LCD display, via digital communication and the binary feedback option
- Control of the speed of positioning travel to set value (Stroke speed - Configurable parameter)
- Alarm for limit violation ("min." and "max." can be configured parameters for correction time and control point)
- Transfer characteristics
 - Linear
 - Equal percentage (1:25 or 1:50 or 25:1)
 - Freely configurable (21 interpolation points in X and Y axis)
- Min. and Max. alarm limits for control points (Digital Feedback)
- Identification number / Day number (2 lines each with max. 32 characters)

Optimal Matching to Operating Conditions

Adaptation to operating parameters is in part automatic through "AUTOSTROKE" and in part through manual input either at the operator panel or by digital communication. When using a PC connected via the communication port, the TZID can be connected to a system already running without engaging the AUTOSTROKE function.

Parameters which are set automatically:

- Valve action (Direct or reverse)
- Positioning travel (Stroke length or angle of rotation)
- Parameters for the control algorithm

Parameters which are set manually:

- Signal input 4-20 mA as full or split range
- Shut-off point (underranging of the set value results in the positioner immediately switching to the closed position)
- Stroke time for full stroke or rotation (Can be set independently for both directions)
- Correction time monitoring via adjustable time parameters (if the positioner is not able to drive the control deviation into the dead band within the set time then an alarm is generated).
- Stroke limiting (Min. and Max. limiting for open and closed)
- Dead band (Hysteresis - adjustable 0.2 to 10%)
- Valve action
 - Direct: Input 4-20 mA/control point 0...100%
 - Reverse: Input 20-4 mA/control point 0...100%

Smart Vision® Software for the TZID Positioner.

The Smart Vision® Software provides an excellent operator interface for use with the **TZID Positioner**. It is a graphics windows-type software with user friendly standard menu mode.

Help information can be called up at any time with the F1 key. Control is via a mouse or keyboard. The installation program is available in different languages and the communication interface can be selected as required. Access to the configuration program can be password protected. Smart Vision enables:

- Individual ON-LINE configuration with plausibility checks
- Data bank set up
- ON-LINE configuration from the data bank
- ON-LINE feedback documentation from the TZID
- Measured value logging from the TZID during operation

Hardware requirements for use of Smart Vision® Software:

Minimum equipment:

- Intel-Pentium II processor 233 MHZ or compatible
- 64 MB main RAM
- 50 MB free hard disk space
- Microsoft Windows 95, 2000, NT 4.0 with service pack 5
- SMART VISION for Windows 3.1x is available on request.
- Internet Explorer 5.0

Recommended equipment

- Intel-Pentium III processor 450 MHz or compatible
- 128 MB main RAM
- 50 MB free hard disk space
- Windows NT 4.0 with service pack 5 or 6a
- Internet Explorer 5.0

Model Number Designation

Order Information

	TZID								
	05	06	07	08	09	10	11		
TZID Intelligent Positioner	TZID								
Housing									
Aluminum with epoxy coating: NEMA 4X, IP 65		A							
Stainless Steel (315, 1.4581): NEMA 4X, IP 65		S							
Actuator Type									
Linear, 0.4" to 3.3" (10 to 85 mm) stroke (Aluminum Housing)								5	
Linear, 0.4" to 3.3" (10 to 85 mm) stroke (SS Housing)								5	
Linear, 0.4" to 3.3" stroke with remote electronics (Aluminum Housing)								Y	
Rotary, 90° rotation, NAMUR-VDI/VDE 3845 (Aluminum Housing)								6	
Rotary, 90° rotation, NAMUR-VDI/VDE 3845 (SS Housing)								7	
Rotary, 90° rotation, NAMUR-VDI/VDE 3845 with remote electronics (Aluminum Housing)								Z	
Agency Certification									
General Purpose								0	
ATEX I.S. Eex ia IIC								1	
ATEX I.S. Eex ia IIC with flammable gas air supply (Aluminum Housing)								2	
FM Intrinsically Safe/Non-Incendive CL I, II, III; Div 1,2: Groups A-G								3	
British Standards Non-Incendive EX N IIC								4	
ATEX I.S. Eex ia IIC with flammable gas air supply (SS Housing)								5	
Control Action/Failure Mode on Loss of 4-20 mA Input									
Single Acting/Fail Open/Close								1	
Single Acting/Fail-in-Place								2	
Double Acting/Fail Open/Close								4	
Double Acting/Fail-in-Place								5	
Connections									
Electrical: 1/2-14 NPT Pneumatic: 1/4-18 NPT (Required for FM Units)								2	
Electrical: Pg. 13.5 Pneumatic: 1/4-18 NPT								3	
Electrical: M20 x 1.5 Pneumatic: M12x1								4	
Electrical: M20 x 1.5 Pneumatic: 1/4 - 18 NPT								5	
Position Feedback Module¹									
Analog 4-20 mA FM/CSA approved, I.S., Non-incendive CI I, II, III; Div. 1, 2; Gr A-G								2	
Digital output (3) for minimum and maximum and general alarm FM/CSA Approved								6	
None (but with Proximity Limit Switches) Select from 2 or 4 below								8	
None								9	
Mechanical Limit Switches²									
None								0	
Two P&F slot-type proximity switches (Normally Closed)								2	
Two P&F slot-type proximity switches (Normally Open)								4	

1. Note that aOption Code 1 in this field is for a standard purpose 4-20mA feedback moduel, Option 2 is offered in place of the general purpose.
 2. TZID with mechanical limit switches is currently only CENELEC approved

Model Number Designation - continued

Accessories

Mounting Hardware

Mounting Kit for linear actuators, stroke 0.4 to 3.3" (designed to IEC534-1 or NAMUR)	0319601
Optional Feedback arm for linear strokes greater than 3.3" (strokes 0.4" to 5.9")	0319602
Mounting Bracket for rotary actuators, 90°, (designed to VDI-VDE 3845)	
80/20 mm	0319603
80/30 mm	0319604
130/30 mm	0319605
130/50 mm	0319606
Mounting Kit for Neles BC/BJ	7959096
Mounting Kit for Neles BC/U & BJ/U	7959097
Mounting Kit for Foxboro V724/V726/V713	0319601
Mounting Kit for Fisher 657A/667	7959155
Mounting Kit for Fisher 1051/30 & 1052/30	7959135
Mounting Kit for Fisher 1051/60 & 1052/60	7959169
Mounting Kit for Bettis RPC/CBA/G Series	0319603
Mounting Kit for Masoneilan Rotopact 400-90	7958312
Mounting Kit for Masoneilan Varipak 28000	7959164
Mounting Kit for Masoneilan Camflex II & Varimax 30000	0319641

Pressure Gauge Block

For single-acting output (with 1 pressure gauge for air supply and 1 pressure gauge for output pressure) Connections 1/4-18 NPT, supply air pressure range 0-10 bar / 0-140 psi	
Output pressure range 0-4 bar / 0-60 psi aluminum version ²	18391-7959064
Output pressure range 0-4 bar / 0-60 psi stainless steel version ³	18391-7959067
Output pressure range 0-10 bar / 0-140 psi aluminum version ²	7959030
Output pressure range 0-10 bar / 0-140 psi stainless steel version ³	7959045
For double-acting output (with pressure gauge for air supply and 2 pressure gauges for output pressure) Connections 1/4-18 NPT, supply air pressure range 0-10 bar / 0-140 psi	
Output pressure range 0-4 bar / 0-60 psi aluminum version ²	18391-7959065
Output pressure range 0-4 bar / 0-60 psi stainless steel version ³	18391-7959069
Output pressure range 0-10 bar / 0-140 psi aluminum version ²	7959031
Output pressure range 0-10 bar / 0-140 psi stainless steel version ³	7959046

Regulator⁵ (1/4 - 18 NPT connections)

Parker No. 06R118AC	1951029_5
---------------------------	-----------

Coalescing Filter⁵ (1/4 - 18 NPT connections)

Parker No. 11F16EC	5328563_2
--------------------------	-----------

Communication Devices

Local Communication adapter for RS 232 connection (LCI)	0319621
HART® Communication modem - USB connection	010031F
HART® Communication modem	01001F
Smart Vision 4CD	SM401-1

Spare Parts

I/P Module Single Acting Fail Open/Close	18381-0-0010000
I/P Module Single Acting Fail In Place	18381-0-0020000
I/P Module Double Acting Fail Open/Close	18381-0-0040000
I/P Module Double Acting Fail In Place	18381-0-0050000
Analog Feedback Module 4-20 mA (FM/CSA)	18381-0-0000400

Instruction Bulletin	42/18-54.1 EN
----------------------------	---------------

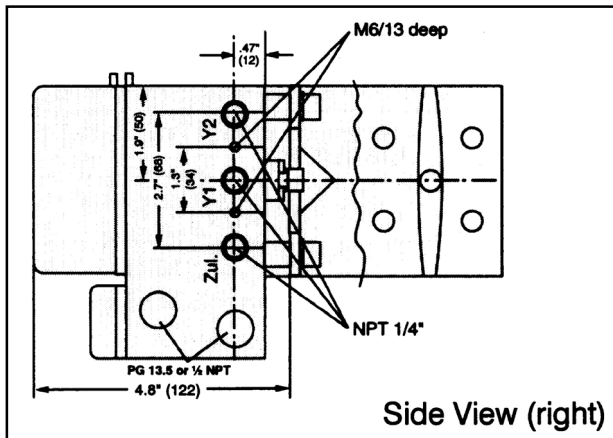
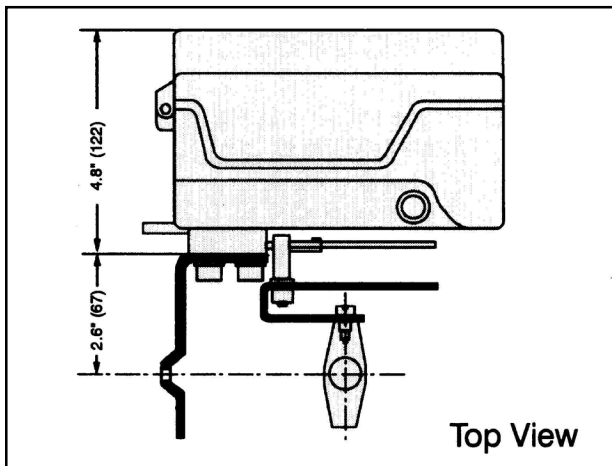
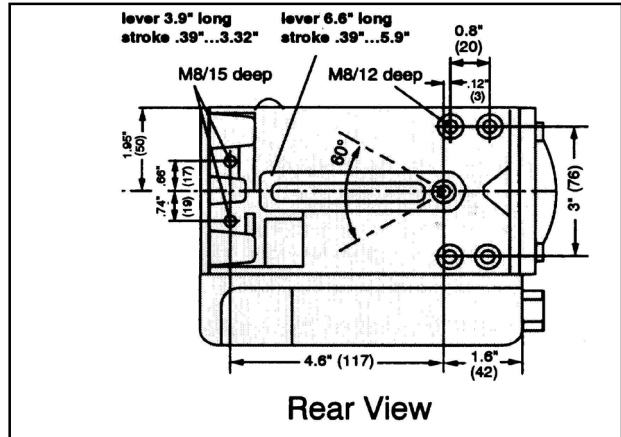
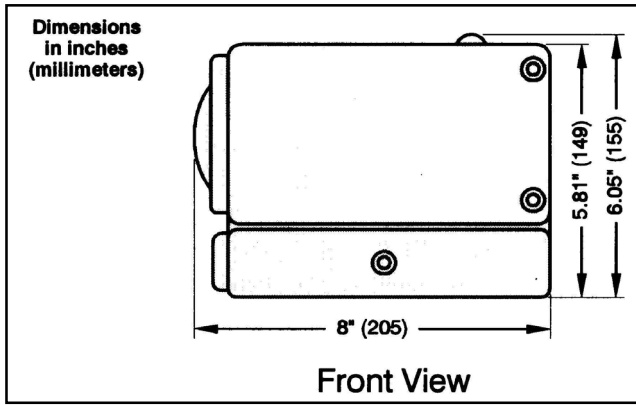
Notes:

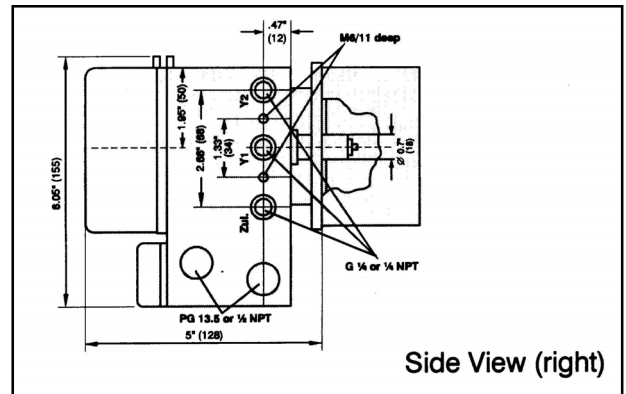
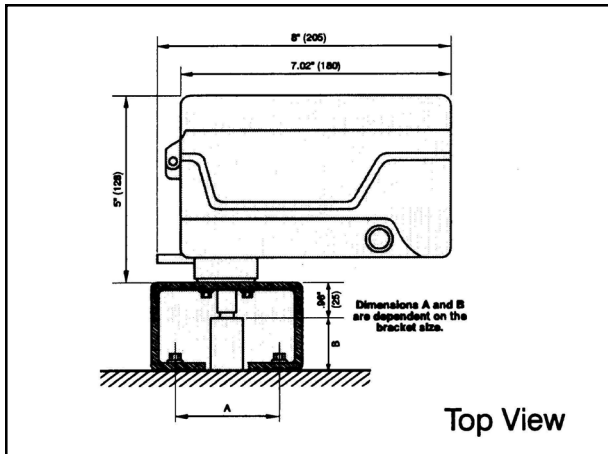
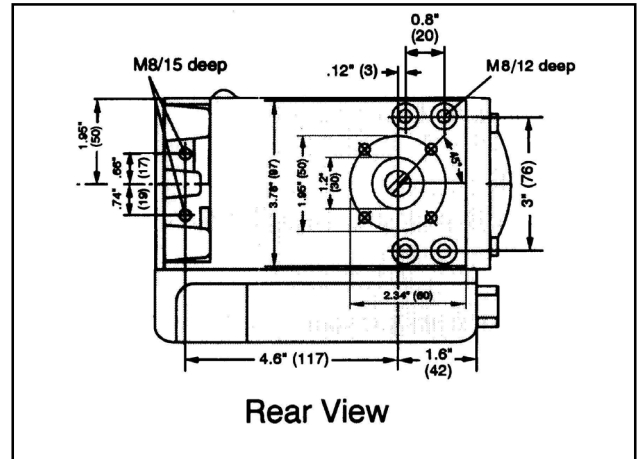
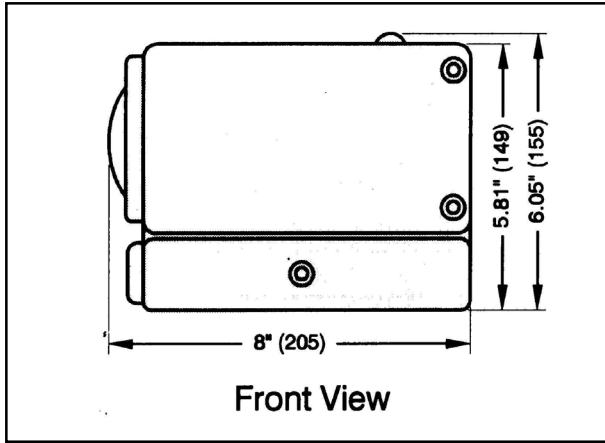
¹ The pressure gauge blocks are delivered as separate units for self-assembly.

² Aluminum version: Aluminum pressure gauge block, painted black (like case) pressure gauges with black plastic case.

³ Stainless Steel Version: Pressure gauge block made of stainless steel 1.4571 pressure gauges with stainless steel case.

⁵ The filter regulators are delivered as separate units for self-assembly.





Notes

ABB has Sales & Customer Support
expertise in over 100 countries worldwide

www.abb.com

The Company's policy is one of continuous product
improvement and the right is reserved to modify the
information contained herein without notice.

Printed in USA (7.1.04)

©ABB 2003



ABB Inc.
125 East County Line Road
Warminster
PA 18974
USA
Tel: +1 215 674 6000
Fax: +1 215 674 7183

ABB Ltd
Howard Road, St. Neots
Cambridgeshire
PE19 8EU
UK
Tel: +44 (0)1480 475321
Fax: +44 (0)1480 217948